

UNFOLDING NARRATIVES

Road Safety Profiles and Data Approach

Mel Eden

Policy Analyst

APRSO Webinar Series
March 19, 2025



What is in the ATO

500+

National indicators of which **42** are Road Safety related

180

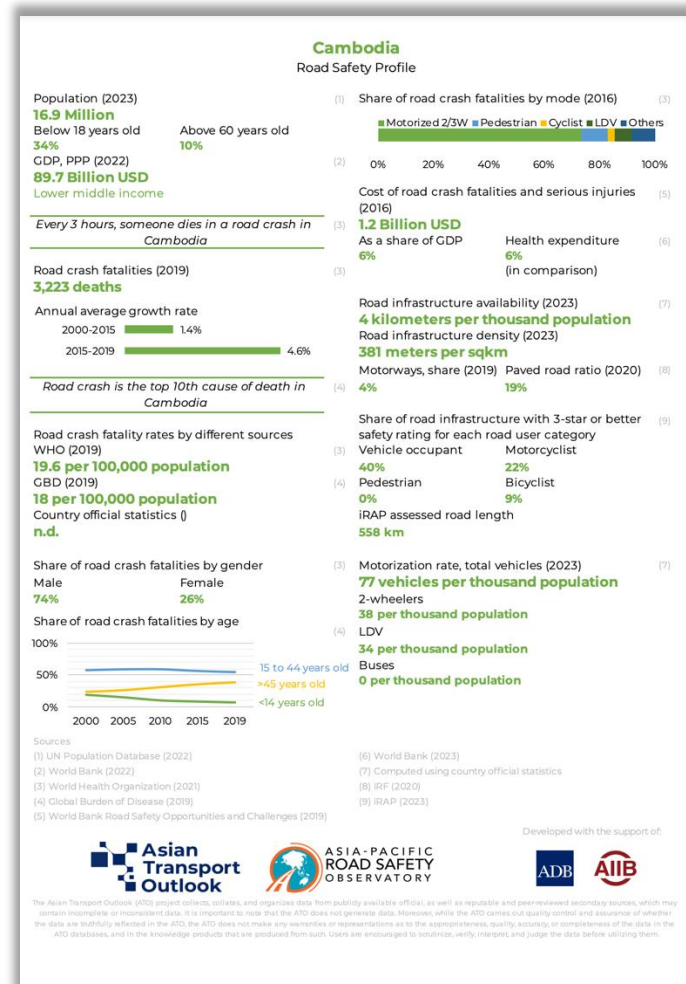
Urban indicators of which **7** are Road Safety related

680+

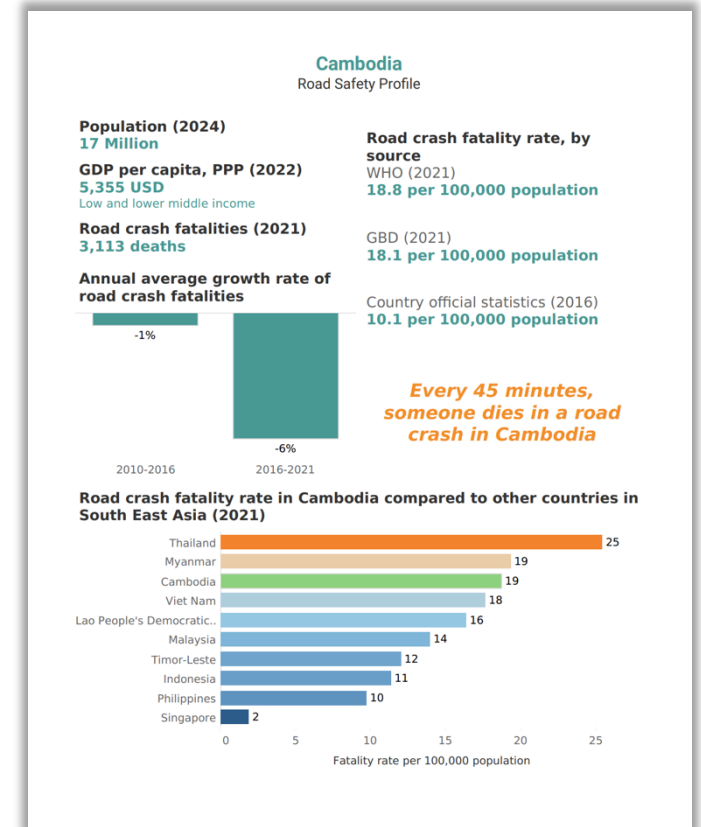
National Policy documents identified of which **14** are Road Safety Strategies

7,700+

Transport policy measures identified of which **4,500** had road safety elements



2023 version

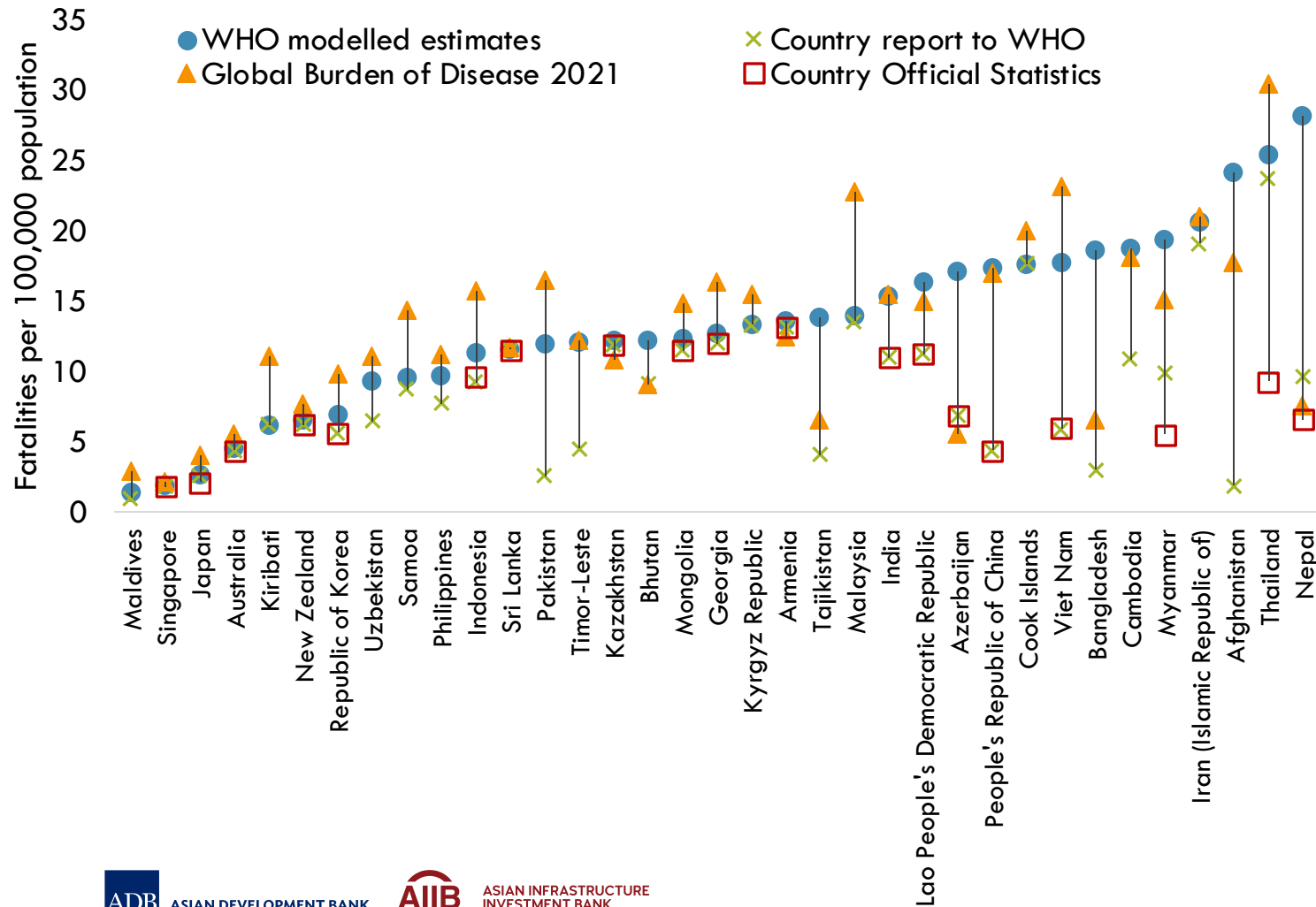


2025 version
 (interactive profile)

<https://asiantransportobservatory.org/>

Unique approach – multiple sources

Road crash fatality rate in Asia by source, 2021



Road Safety Profile snippet

A notable discrepancy exists between reported road crash fatality numbers. While the World Health Organization (WHO) estimated approximately 3,000 fatalities in 2021, national statistics and the Global Burden of Disease project reported figures closer to 2,000 for 2017 and 3,000 for 2021. This difference in data collection and reporting methodologies underscores the need for improved and harmonized data collection to accurately assess the problem's scope and track progress.

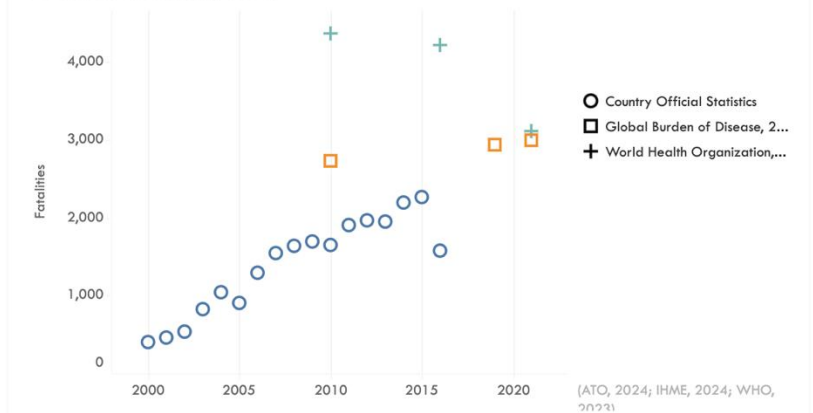
Road crash fatality rate, by source
WHO (2021)
18.8 per 100,000 population

GBD (2021)
18.1 per 100,000 population

Country official statistics (2016)
10.1 per 100,000 population

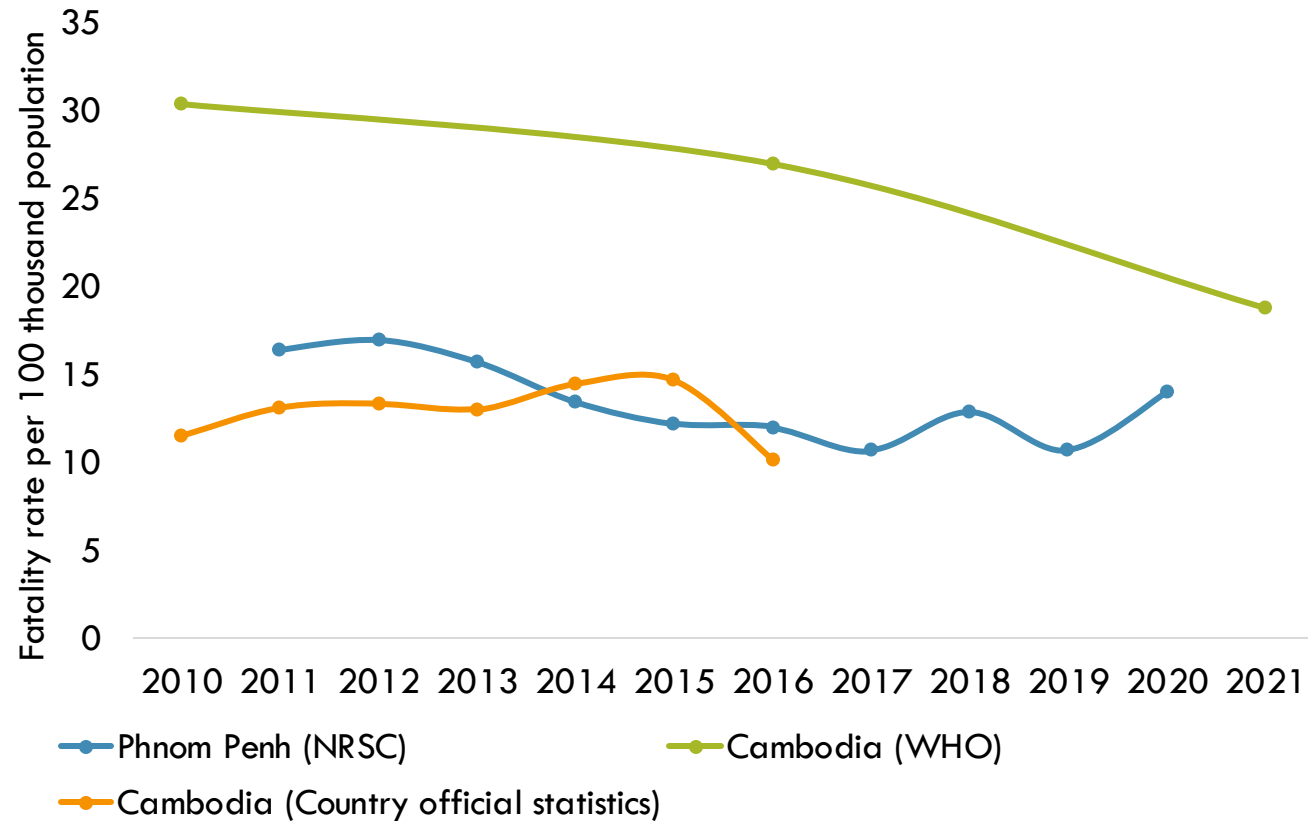
Every 45 minutes,
someone dies in a
road crash in
Cambodia

Road crash fatalities, by source



Data at different scopes

Road crash fatalities in Phnom Penh, Cambodia



Urban transport profile



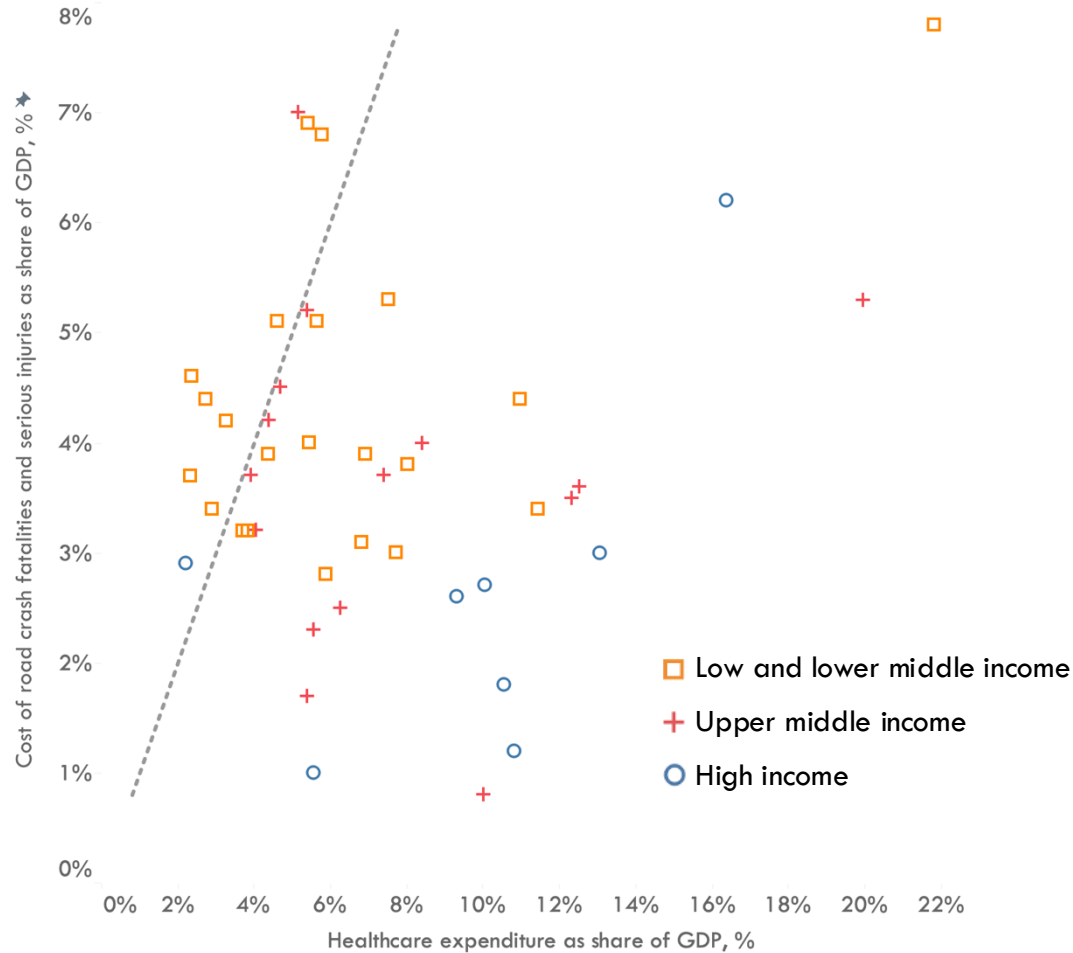
PHNOM PENH, CAMBODIA

URBAN TRANSPORT PROFILE

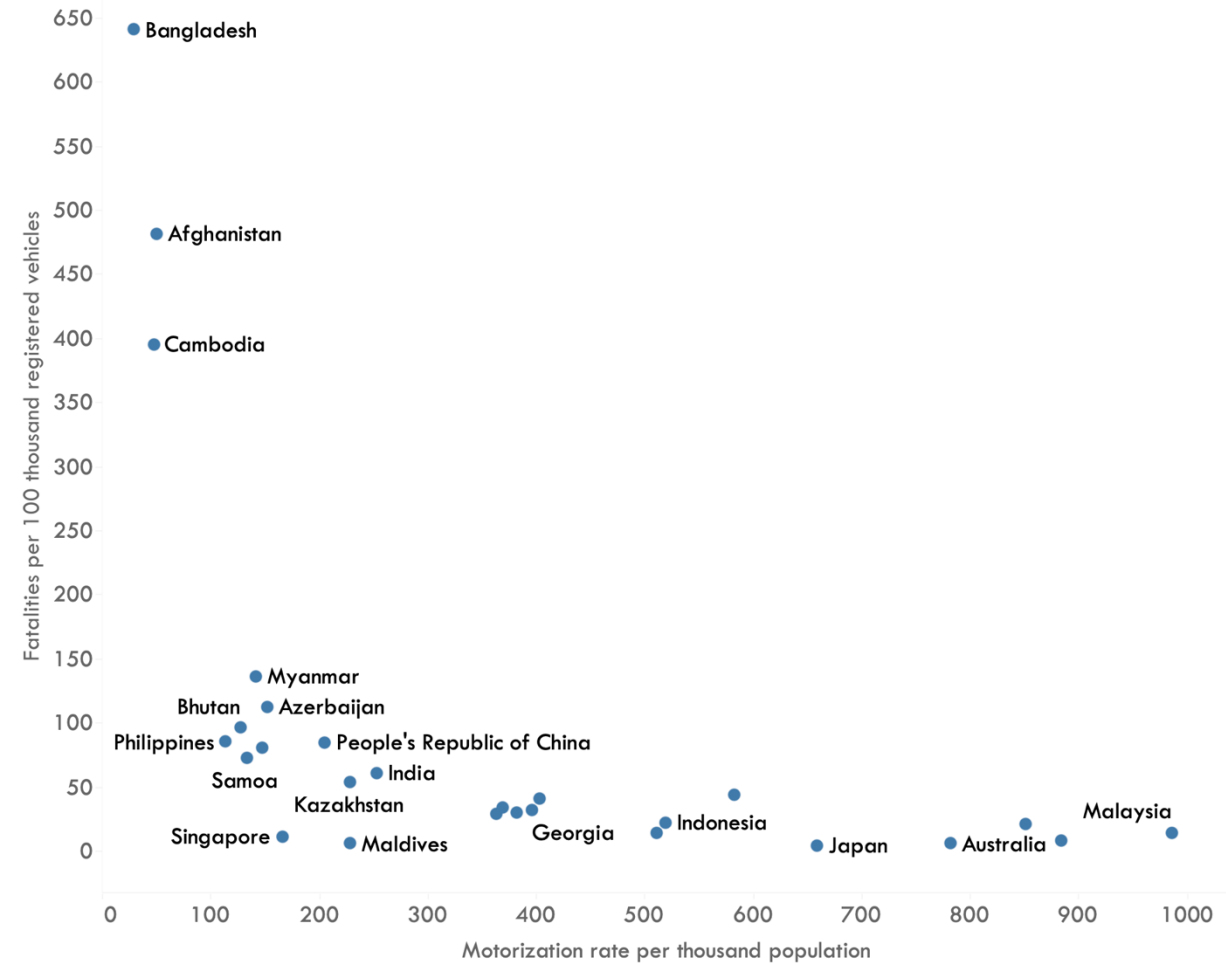
December 2024

Road safety in the lens of other dimensions

Cost of road crash fatalities and serious injuries vs. country healthcare expenditure as share of GDP (2021)



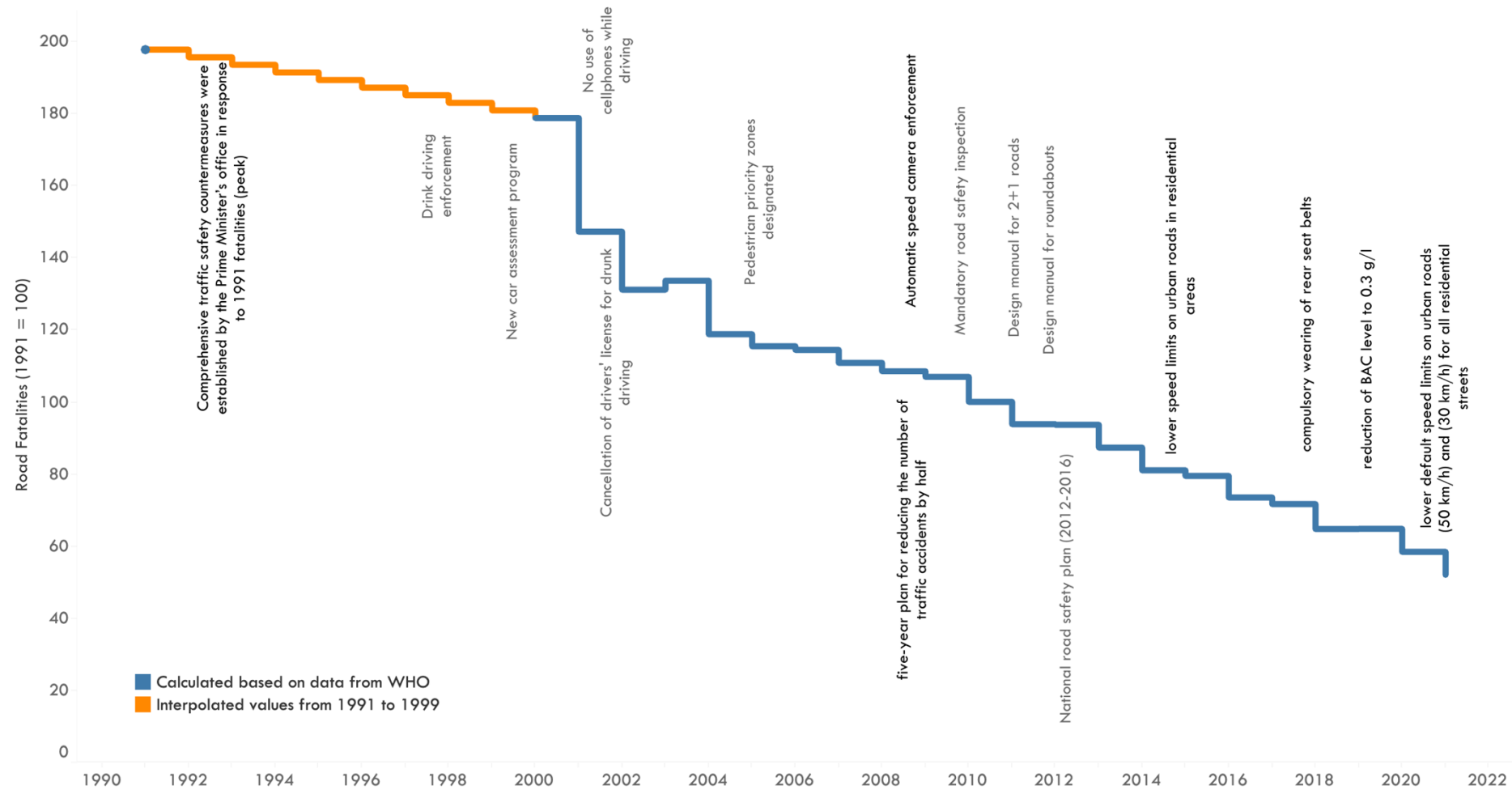
Road crash fatalities per vehicle registration (2021)



Source: WHO, World Bank, Country official statistics

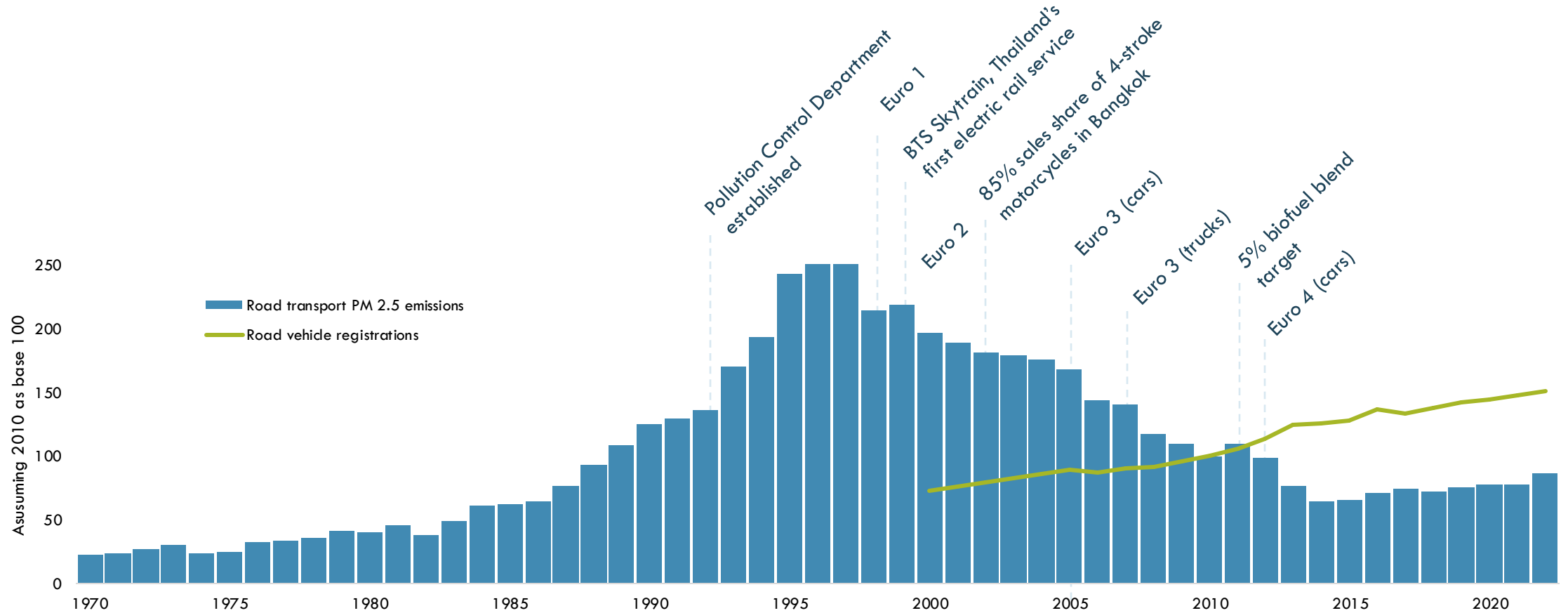
Understanding data and policy interplay

Republic of Korea's Road Safety Journey



Data and policy interplay: Thailand air pollution example

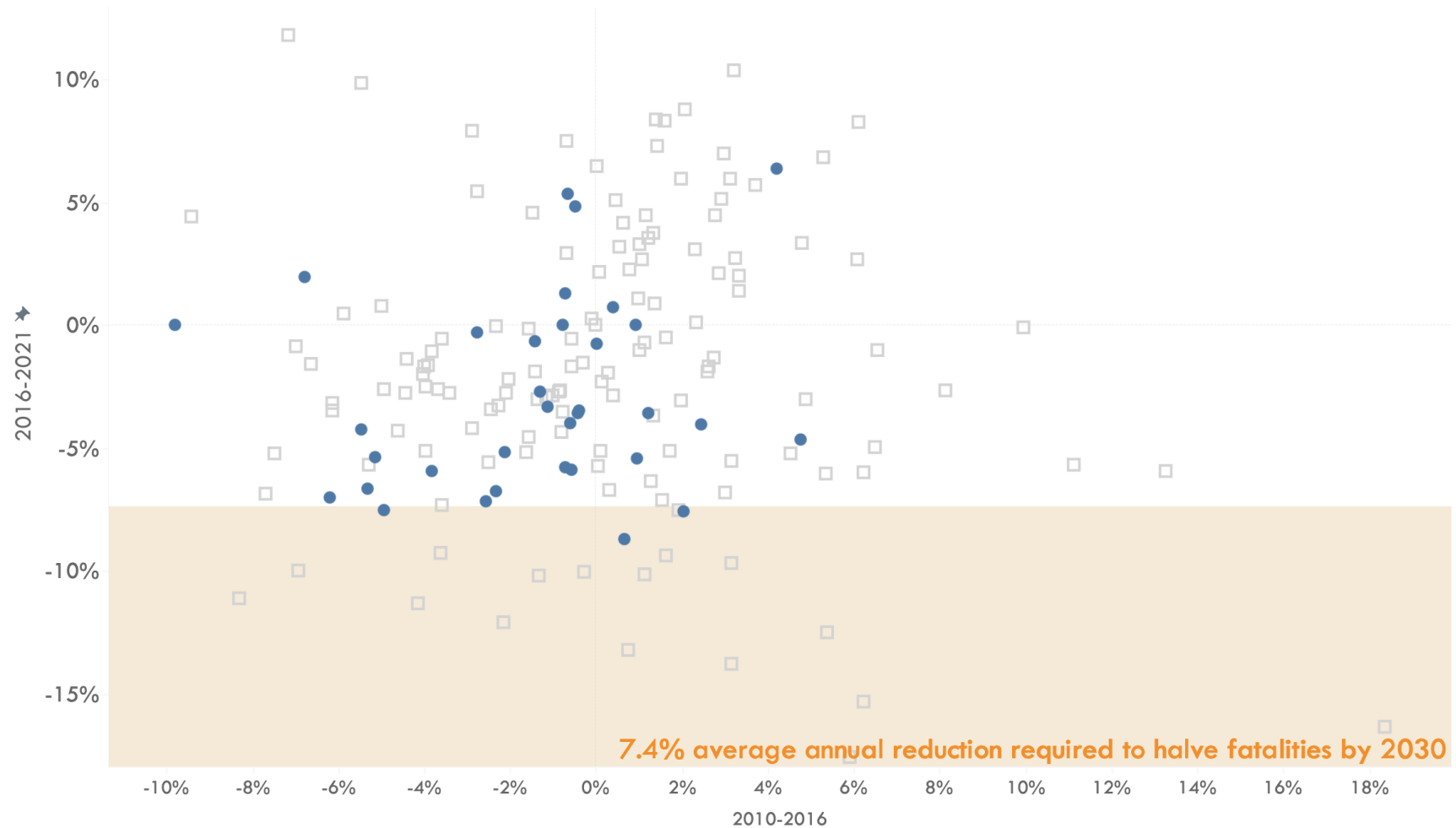
Road transport PM 2.5 emissions and vehicle registrations



• Source: transportpolicy.net, World Bank, ADB

Data is key to the past and the future

Road crash fatality growth rate vs. reduction goal



asiantransportobservatory.org

“ATO translates data into insights, policies, and investments”

ATO Team	info@asiantransportobservatory.org
Jamie Leather	jleather@adb.org
Andres Pizarro	andres.pizarro@aiib.org
Manuel Benard	manuel.benard@aiib.org
Alvin Mejia	alvinmejia@asiantransportobservatory.org
Sudhir Gota	sudhirgota@asiantransportobservatory.org
Mel Francis Eden	meleden@asiantransportobservatory.org
Adwait Limaye	adwait@asiantransportobservatory.org
Benjamin Soco	benjaminsoco@asiantransportobservatory.org